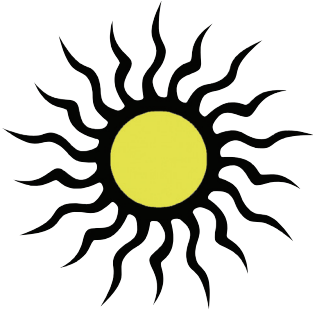


RIVERFIELD COUNTRY DAY SCHOOL



THE RAVEN'S ROOST: PRE-K SUMMER PROGRAM

Calling all Kindergarteners for Fall of 2012! The Raven's Roost program will be held in the K-1 Wing so that children become familiar with their fall school environment. To further bridge the transition, children will be led by a teacher from the 3s-5s Wing and a teacher from the K-1st Wing.

Join us for a summer where discovery and adventures are countless, opportunities for creativity abound, and the joys of childhood overflow. The Raven's Roost will be full of excitement for our almost-Kindergarteners. Topics explored include:



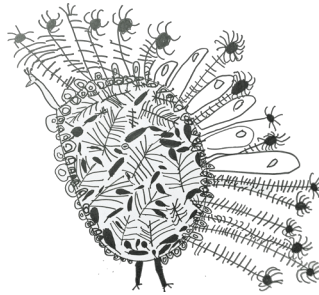
Science/Nature

- Magnets and Electricity
- Rockets
- Volcanoes
- Concoctions
- Crystals



Art

- Mosaic
- Clay
- Paint
- Sewing
- Wire



The Raven's Roost is open to children going to Kindergarten in the Fall of 2012. Children may enroll for 3 days (W-Th-F) or 5 days each week. Children may attend all 12 weeks for the price of 11. If you choose for your child to only attend 11 weeks, please notify the school in advance of the week he/she will be absent.

Each week, children will enjoy two mornings at an offsite pool, a field trip, science experiments, art activities, water play, visits to the barnyard, and hikes around our beautiful 120-acre campus.

SUMMER 2012

Children entering kindergarten in the fall

PRE-K TUITION Enrollment is required for the entire summer (May 22-August 10)	(Due May 15, June 15, and July 15)	SCHOOL DAY 8:30-3pm	EXTENDED DAY 7-5:30pm	LUNCH (per month)
	5 days/week (M-F)	\$910	\$1,170	\$85
3 days/week (W, Th, F)	\$570	\$730	\$60	

Students may stay from 5:30 - 6pm for an additional \$40/month.

If enrolling for summer only, please use the Pre-K summer registration form. Those enrolling for the summer and school year should complete the Pre-K summer registration form and the K-3rd school year registration form and corresponding contract.



SUMMER 2012 CALENDAR POLICIES & PROCEDURES

Summer 2012 Calendar

May 16	Wednesday	Last day of 2011-2012 School Year
May 17,18,21	Th, Fri, Mon	Staff In-Service - NO SCHOOL
May 17	Thursday	8th Grade Closing Exercises
May 18	Friday	Upper School Commencement
May 22	Tuesday	First Day of Summer Camp
May 28	Monday	Memorial Day – NO CAMP
June 4	Monday	CIT Training (required for all CITs)
June 15	Friday	Fathers Day Picnic
June 22	Friday	RFA Friday Night Out
July 4	Wednesday	Independence Day – NO CAMP
July 6	Friday	Drillers Family Night (with fireworks)
July 20	Friday	Raven Sleepover
July 27	Friday	Movie Night featuring The Lion King
August 10	Friday	Last Day of Summer Camp
August 13-17	M-Fri	Staff In-Service - No School
August 20	Monday	First day of 2012-2013 School Year

Special Opportunities & Events

Father's Day Picnic

Friday, June 15th – lunch time

All Riverfield families are invited to join us in a special RCDS tradition the Family Cookout in honor of Father's Day. On the menu, hot dogs and the usual picnic fixin's. RSVP forms will go out shortly before the event. The picnic is open to summer and school year families.

RFA Friday Night Out

Friday, June 22nd, 6pm-11pm

RFA Friday Nights Out is offered for Infant -3rd grade campers. With supper, special activities, and a movie, this is as much fun for the campers as it is for the parents, who have an adult evening out. After hours of fun, everyone will go home for a good night's sleep. Watch for information and reservation forms.

RFA Raven Sleepover

Friday, July 20th, 6pm to 11pm or 8:30am

This sleepover is are offered for Infants - 3rd grade campers. With supper, special activities, and a movie, this is as much fun for the campers as it is for the parents, who have an adult evening out. After hours of fun, campers settle down for the night in their classrooms. Parents can pick campers up by 11pm or, after their good nights rest and tasty breakfast, parents can pick them up by 8:30am. Watch for information and reservation forms.

After Camp Programs

Extra curricular activities through Pied Piper & Company and Amazing Athletes and Almost Actors are available after 3pm for additional fees. Forms are available in early spring.

RIVERFIELD

COUNTRY DAY SCHOOL

2433 West 61st Street
Tulsa, Oklahoma 74132
918.446.3553
riverfield.org

Registration Fee

The registration fee is a non-refundable annual administrative fee per camper. The Summer registration fee is \$50 for each camper, unless the camper is already registered for the 2012-13 school year, as that registration fee covers summer as well.

Deposit

Each camper must have a \$200 tuition deposit on account. If you have applied your deposit toward tuition previously, you will need to submit another \$200 deposit along with the \$50 registration fee for each camper. If you are unsure if your camper has a deposit on file, contact kbusenburg@riverfield.org.

PayEasy

We offer PayEasy, a bank draft option for tuition, etc. If you are interested in enrolling, contact kbusenburg@riverfield.org to receive the authorization form. Please complete and return this form with a voided check, the \$50 registration fee, and \$200 deposit, if applicable. Registration fees cannot be drafted through PayEasy.

Registration/Changes/Cancellations

No refund is given for absences. Requests for changes in camp enrollment will incur a \$25 per change fee. No cancellations are allowed for any of Summer Camp after April 2nd and full tuition must be paid. Registration is processed first-come, first-served.

Camp Tuition Payment Schedule

Tuition for Weeks 1-4 is due May 15th, Weeks 5-8 is due June 15th, and Weeks 9-12 is due July 15th. The Business Office will email a statement to those with a balance due on the 5th of each month. If you are signed up for PayEasy, your bank account will be drafted on either the 15th or 25th of the month. If you are not signed up for PayEasy, your payment can be placed in the tuition box on the front desk in the main building. A late payment fee of 5% of the unpaid balance will be due after the last day of the month. We do not accept credit cards for payment of tuition or fees.

Lunch

For Pre-K campers lunch must be selected (or not) for the entire summer. If lunch is brought from home, the lunch should not need to be refrigerated or heated. Milk is available for everyone.

Before and After Camp Care

Riverfield offers care for campers from 7am - 8:30am and 3pm-5:30pm (or 6pm) for an additional fee.

Confirmation of Summer registration will be sent to families in April.

Non-Discriminatory Statement

Riverfield Country Day School is a non-profit, independent school with no religious affiliation. Riverfield is a welcoming community that strives to treat everyone fairly. All decisions regarding admissions, employment, administration, and student and faculty life are made without regard to race, color, religion, national origin, ancestry, ethnicity, age, disability, gender, sexual orientation, marital or family status, or any other criteria prohibited by law. All rights, privileges, educational, athletic, school-administrated programs, and activities made available by the school are extended to all students, families, faculty, and staff.